

Comfort

Be captivated with the Prevé’s design sensibilities that extend inwards to reveal an ergonomic layout with spacious cabin comfort, extra rear passenger legroom and vast headroom with a cavernous boot space.



ERGONOMIC DESIGN
The cabin is designed for maximum comfort for the driver and passengers, with wide, ergonomic seats and plenty of rear and front leg room, creating a feeling of lightness and elegance.



BOOT SPACE
508-litre boot space gives plenty of room to store extra large luggage bags, golf bags and oversized suitcases.



AMPLE STORAGE SPACE
Numerous storage areas including centre console box, a large glove compartment and multiple cup holders. Also equipped with a tissue box compartment at each of the 4 doors and complemented by handy hooks for hanging a variety of items.



ENGINE PUSH-START*
The car integrates elegant technological features such as this engine push-start button for your convenience.



VARIANT		Executive		Premium
		5 M/T	CVT	CVT
Powertrain		CAMPRO IAFM+		CAMPRO CFE
Engine		1597		1561
Total displacement	cc	76.0 x 88.0		76.0 x 86.0
Bore x stroke	mm x mm	80/5750		103/5000
Maximum output	kW / rpm	150/4000		205/2000-4000
Maximum torque	Nm / rpm	50		50
Fuel tank capacity	L			
Performance				
Maximum speed	km/h	180	170	190
Acceleration 0 - 100 km/h	sec	12.0	12.5	9.6
Fuel consumption @ 90km/h	L/100km	6.2	5.8	6.6
Minimum turning radius	m	5.3		
Transmission		5-speed manual	6-speed CVT	7-speed ProTronic
Chassis				
Power steering		Hydraulic power steering		
Suspension	front	Macpherson Strut		
	rear	Multilink with stabiliser bar		
Brake	front	Vent disc 15"		
	rear	Solid disc 15"		
Tyre & wheel size		205/55 R16 - Alloy		
Dimension & weight				
Overall L x W x H	mm	4543 x 1786 x 1524		
Wheelbase	mm	2650		
Track front & rear	mm	1542		
Ground clearance	mm	155		
Luggage volume	L	508		
Kerb weight	kg	1305	1325	1340
Gross vehicle weight	kg	1665	1685	1700
Safety & security				
ABS with EBD		✓		✓
Dual SRS airbags with seatbelt pre-tensioner		✓		✓
Front active headrest		✓		✓
Anti-trap power window (Driver side only)		✓		✓
Front and rear fog lamps		✓		✓
Immobiliser		✓		✓
Brake Assist (BA) and Traction Control		-		✓
Electronic Stability Control (ESC)		-		✓
Side airbags		-		✓
ISOFIX seat mountings		-		✓
Auto headlamp		-		✓
Features				
Seat		Fabric (water repellent)		
Door trim		Fabric		
Steering wheel		With audio switch		Leather wrapped with audio switch
Side mirror with LED turn signal		Manual fold		Auto fold
Audio system		CD MP3 Player with Bluetooth, USB & iPod connectivity		
GPS navigation		✓ (Portable)		✓ (Built in)
Driver's seat height adjuster		✓		✓
Projector headlamp with LED position lamp		✓		✓
Paddle shifters		-		✓
Auto climate air conditioner		-		✓
Trunk lid remote release		✓		✓
Rear spoiler		-		✓
Push start button		-		✓
Auto cruise		-		✓
Auto wipers		-		✓
Follow me home light		✓		✓
Accessories				
Coil mats		✓		✓
Car safety kit		✓		✓
Multipurpose container		✓		✓
Luggage tray		✓		✓
4G in car WIFI		✓		✓
Tinted film (4 windows with break resistance)		-		✓
Color option				
Fire red		✓		✓
Genetic silver		✓		✓
Solid white		✓		✓
Tranquility black		✓		✓
Elegant brown		✓		✓



Fire red



Genetic silver



Solid white



Tranquility black



Elegant brown



All information detailed in this leaflet is correct at the time of printing. Perusahaan Otomobil Nasional Sdn. Bhd. reserves the right to make changes to the colours, features and/or other specifications detailed in this leaflet as well as discontinue any individual model without prior notice. The vehicle may differ slightly from those featured in this leaflet. Please consult your PROTON dealer to ensure the vehicle is in accordance with your expectations.
2012 (All rights reserved) Perusahaan Otomobil Nasional Sdn. Bhd.

www.protonpreve.com

All features and specs mentioned in this leaflet are dependent upon variant. Actual car and specifications may vary from the visuals and specifications shown. Please check with your authorized PROTON dealer for more info.

PREVE/01032012/REV0



PROTON
RIDE
&
HANDLING

ELECTRONIC
STABILITY
CONTROL

1.6 CFE*

7 SPEED
PROTRONIC

5 YEAR
WARRANTY



* Available only in Premium variant.

Proton *PREVÉ*



Prevé. It's a word that means proof. A name that embodies everything PROTON aspires to and, ultimately delivers.

But don't take our word for it. Let the car be the proof of our commitment to be better. Because we know you won't settle for anything less.

Style

The Prevé captures the breathtaking image of power and athleticism beautifully. The interplay of curves and muscular edges along its sleek profile conveys movement while its interconnected accents give it a stable, wider feel.



A NEW SIGNATURE LOOK: PROTON WINGS
A unified design element that fuses the headlights, the PROTON emblem and air-intake grille with seamless lines and classy curves.



16" ALLOY WHEELS
Anchors the Prevé's dynamic stance and sleek exterior style.

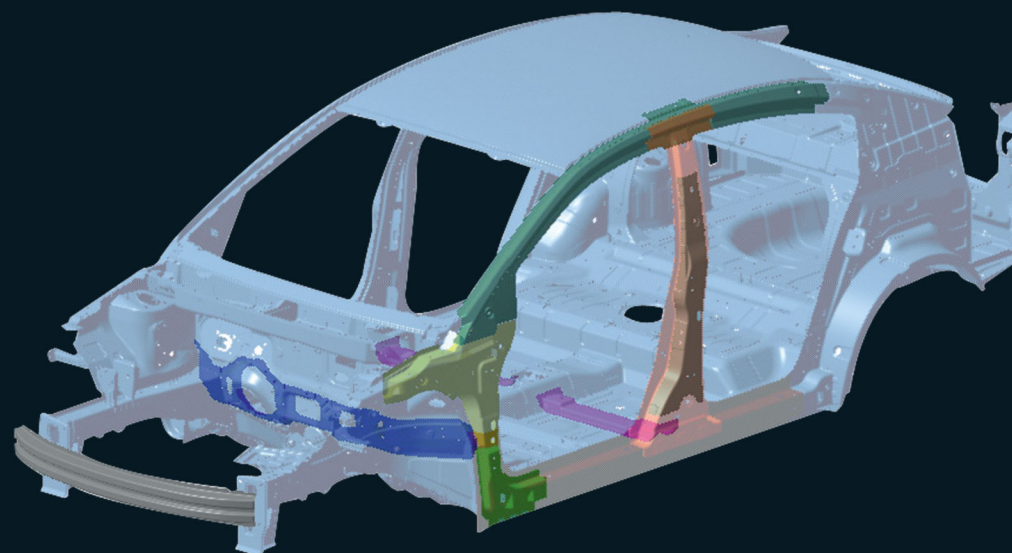
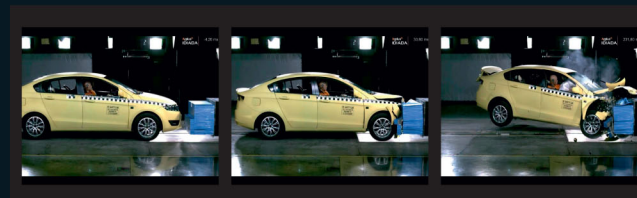
LED LIGHTS
Blending gorgeous style with functionality.

AERODYNAMIC STYLING
Designed to reduce drag and enhance fuel efficiency.



Safety

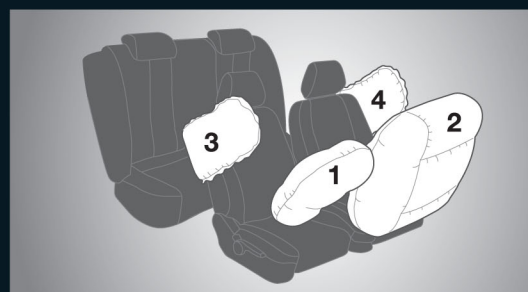
Beneath the plush trimmings of the Prevé's frame lies an interconnected web of safety features and technology; such as its **Reinforced Safety Structure** that helps ensure the cabin remains intact during a collision, **Active Headrests** that help prevent neck injuries, and a **Collapsible Steering Wheel** that breaks apart to avoid impacting the driver – all designed to work in harmony to keep you protected and in control as much as possible.



RESS

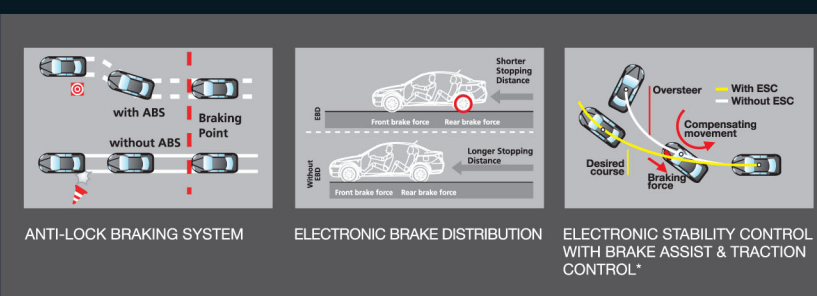
REINFORCED SAFETY STRUCTURE
The RESS achieves better torsional rigidity yet retaining ideal weight, which adds to the Prevé's fuel efficiency. It is designed to comply with global automotive safety standards and offer maximum protection from front, side and rear impacts. Its frame consists of 12 key components forged using the hot press process for high-tensile strength.

FOUR AIRBAGS*
Fully equipped with front and side airbags.



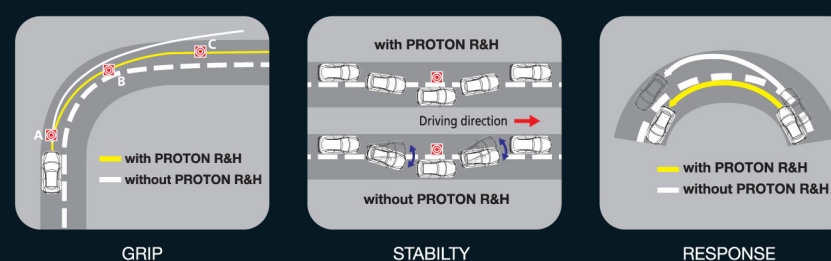
HIGH PERFORMANCE BRAKING

While the car boasts impressive acceleration, it is equally critical for it to stop quickly. It excels in this respect with its **Electronic Brake Distribution** and **Brake Assist** system. The **Traction Control** ensures better tyre grip on slippery road and maximises vehicle acceleration.



PROTON RIDE HANDLING

Tuned by PROTON engineers to Lotus specifications, the Prevé's handling boasts unsurpassed control during emergency situations.



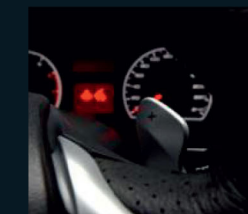
Performance

The Prevé breaks all barriers among compact sedans by offering category-defining features and performance.



1.6L CHARGED-FUEL EFFICIENCY (CFE) ENGINE*

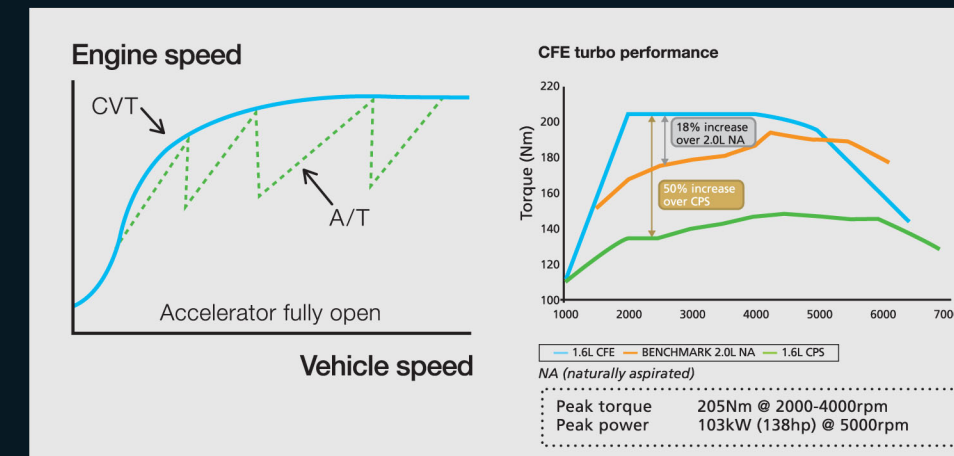
The 1.6L CFE engine with light pressure turbocharger offers the best of both worlds – **138hp** of sheer adrenaline rush and **205Nm** of torque balanced with an impressive fuel economy.



7-SPEED PROTRONIC TRANSMISSION WITH PADDLE SHIFTERS*

Race car-inspired technology that lets you drive the way you want – with easy comfort or exhilarating control.

7 SPEED PROTRONIC



CONTINUOUS VARIABLE TRANSMISSION (CVT)

The CVT uses a belt rather than fixed gears to turn engine torque into power, which means better fuel economy, less gear wear and tear, and more eco-friendly emissions.

Intelligent features

The Prevé is engineered with a number of thoughtful features in order to make your life easier and your drive more pleasurable.

sid

SMART INFO DISPLAY
Displays information and status updates on the car's various functions – such as average fuel consumption, KMs to empty tank, battery health and faulty bulb indicators.



AUTO RAIN SENSOR*
Automatically switched on when your windscreen is obscured with water.



TOUCHSCREEN GPS*
Directions and routes displayed conveniently.



ELECTRIC WING MIRROR
Adjust angle or fold in automatically.*



AUTO LIGHT SENSOR*
Set this to auto and never worry about forgetting to switch on your headlights again.